

# PENNYRAIL

May 2013

VOLUME 17 NUMBER 5

Please send your digital photos and story material to [bill@fbcmadisonville.com](mailto:bill@fbcmadisonville.com)

or mail to  
**Bill Thomas,**  
First Baptist Church,  
PO Box 607,  
Madisonville, KY  
42431.



## Chapter Chatter

**Next Meeting Monday,  
May 20, 2013, 7:00 pm  
Former Louisville & Nashville  
Passenger Station, Hopkinsville, KY**

### Program Host Cliff Downey

**Bill Ferrell  
Cookout: Burgers and Hotdogs at 6:30**

## NRHS Mission Statement

National Railway Historical Society, Inc. Mission Statement - The National Railway Historical Society promotes railway heritage preservation and educates its members and the public about rail transportation, its history and impact, with a focus on North America.

### Objectives

1. To foster the experience of rail transportation
2. To develop and expand educational services and programs
3. To build and maintain archives, to encourage and to support archival activities, and to disseminate information in archives
  - A. To increase collaboration between existing archives
  - B. To develop listing of National and Chapter archives
4. To support preservation of memorabilia and artifacts
5. To facilitate association and networking
6. To support preservation of memorabilia and artifacts
7. To maintain and grow the organization

### In this issue...

- ◆ Words From Our President
- ◆ New Mystery Location
- ◆ Photos From the Membership
- ◆ Regional Rail News

Western Kentucky Chapter, NRHS, Inc.

111 Reed Place  
Madisonville, KY 42431

\* \* \* \* \*

President  
Ricky Bivins

Vice President  
Steve Miller

Secretary Treasurer  
Wally Watts

National Director  
Wallace Henderson

Director at Large  
Thomas Bryan

“PENNYRAIL” is the official publication of the Western Kentucky Chapter, NRHS. Send news notes, historical notes and other rail information to:

Editor  
Bill Thomas

1025 Lakewood Drive  
Madisonville, KY 42431  
(270) 825-4623 Home  
(270) 339-9482 Cell  
e-mail:  
[bill@fbcmadisonville.com](mailto:bill@fbcmadisonville.com)

Chapter members enjoy a CSX roll-by before the April meeting. My baby is due in August! Got to get on a diet! (Bill, editor). Notice the graffiti.



## Ricky's Replies

President, Ricky Bivins

Well NRHS Members, the merry month of May is upon us. And as is usually the case, we will meet in Hopkinsville KY, on May 20, 2013 as guests of our Hopkinsville Members. Our meeting will take place at the usual time of 7:00 PM and we will meet in the former L&N RR Passenger Station located on Hwy 68/80 right down town. Every year we leave Hopkinsville informed and with a new appreciation for the town, its railroad interests and its people.

This month should carry on that tradition!

Our Hop'town Members have a guest speaker lined up for us. Cliff Downey is a local author of railroad books and a very knowledgeable individual. Cliff has in the past been a member of our NRHS Chapter. I am sure he will entertain and inform us Monday Night.

Our proposed trip to Progress Rail is on permanent hold. Members Keith Kittinger and Rich Hane have exhausted every option to make contact with Progress and both have constantly come up empty handed and feeling "brushed off". Rich has learned that Progress is very busy, understaffed and without a Human Resource person. As a result, word was handed down that a tour is out of the question. So at this point there is no need in continuing with it. We have many other options to consider and as usual all that is needed is for a member to get the ball rolling and come up with a tour, trip or other event and bring it before the membership.

Steve Miller will have a report on our fall trip aboard the Nashville & Eastern which will be upon us in a few months.

The June Friday Night Live event, downtown Madi-

sonville will be Friday June 14, 2013. Wally Watts plans to have his steam engines on hand, Bill Thomas hopes to have his Mobile Garden Railroad running, Steve may give the video outlet another try this year and I will be doing what I seem to do best at this event....TALK! And I will pass out our new Chapter Calling Cards which thanks to Matt Gentry, will be available just in time. This has become a signature event for us and is a load of fun. Adults and kids alike, get a kick out the sights and sounds of our display.

So members, try to make an appearance, even if only for an hour or so.

Jim Pearson, our Web Master has set up an email for the Chapter as was discussed last month. That address is: [info@westkentuckynrhs.org](mailto:info@westkentuckynrhs.org). Jim and I have the user name and pass word. We as a Chapter need to discuss Who/Whom shall be responsible for checking the email and responding. As of this writing, our inbox is empty!

As for the display cabinet at Parkway Plaza Mall....I have done nothing! Short but true.

The Hopkinsville meeting is shaping up to be a good one people, so don't miss out.

Rick Bivins

**Below Right:** Dave Millen always has some interesting stories to tell, especially about his father's days on the L&N as a trainman. Here is his sharing one such account with the April chapter meeting attendees.



Bill Heaton photographed these GMTX switchers at Atkinson Yard, May 16, 2013. I believe they are modified MP15s. Someone more knowledgeable might correct me.

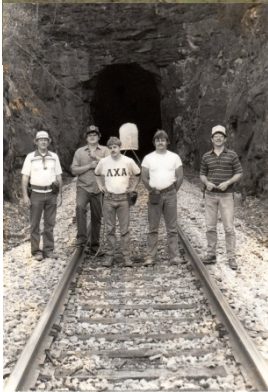




## Mystery Location - Where Are We?

Over the years several members have frequented this south western Illinois town to watch trains. One of these two railroads now owns this line along a famous river while the other railroad operates over the line when said famous river floods its banks. Name the River, the town, the former owner of this line and the current owner. Submitted by Ricky Bivins.

If you think you know the location (city and state) of our mystery photo, send your answer to me via email: [bill@fbcmadisonville.com](mailto:bill@fbcmadisonville.com), or mail to Bill Thomas, 1025 Lakewood Dr., Madisonville, KY 42431. Correct responses will be given special notoriety.



**Left:** Several chapter members identified April's mystery shot, but they were all in the picture. Better luck with the cornfield above.

**Below:** I chased this train up and down the Columbia Gorge, the dates were June 6 and 7, 1997. But my trusty Yashica had finally given up the ghost. My developed Ektachrome slides were all out of focus.

If it hadn't been for photo stops and preventive stops to check for hot bearings, I would have only seen this train once in each direction. These two days the former ESPEE 4449 was running excursions between Portland, Oregon and Wishram, Washington. The Burlington Northern graciously hosted these runs, and the BNSF continues the practice. The train is traveling on the former Spokane, Portland & Seattle (SP&S) Railway on the Washington side of the

Columbia River. Great scenery, good safe access for railfans, Beacon Rock, the Bonneville Dam tunnel, other rock lined tunnels and miles of track parallel to Hwy 14 only a few yards off the fog line. It doesn't get much better than that, unless all your own slides had developed nicely too. Duh.!

The tunnel here is the result of moving the line further away from the river and dam when the "dam" people built the second powerhouse and bigger & better fish ladder at Bonneville. Lessons learned: a. Not a great idea to chase trains in a motor home, and b. Always have a backup camera. Credit to Gary Ostlund, submitted by James Futrell.





# Photo Section



**Left:** Rebuilt 4031 leads K325 coke loads to Ensley AL. at MP 201 in TN. Photo by Wallace Henderson.

**Right:** Wallace Henderson also shot this SD70MAC transferred from CSX to P&L as the same number, ex -702 GMD 1997, at Paducah April 30, 2013.



**Above:** Ricky Bivins shot this SD40-3 from his front porch in Morton's Gap, KY, on the Henderson Sub. I must say, "I'm not a fan of the boxy units yet, but if it keeps a 40-2 on the rails, so be it!"

**Right:** Amtrak unveiled its new "City Sprinter" locomotive for NE Corridor service. Steve Gentry emailed the link to this photo and a nice article on the specifics of the locomotive. Go to <http://news.yahoo.com/amtrak-unveils-locomotives-replace-aging-174941862.html>. I will email the chapter the same link so you can simply click there without all the typing.



# *Rail Flicks*

By Tommy Johnson



Title	<b>Arizona's Shortline Railroads</b>
Producer	Pentrex
Format	DVD full screen
Playing Time	1 hr 40 min
Purchased From	Trainvideodepot.com
Date Purchased	4/26/2013
Price Paid	\$24.95

This video shows short line railroad operations in Arizona, with the action taking place in the early 1990s. Several different shortlines are visited and we begin with the Copper Basin Railway which runs 54 miles from Magma Junction, where it interchanges with the old SP line, to Hayden and serves the huge open pit Ray copper mine. This territory is southeast of Phoenix.

We are treated to some panoramic views of the Arizona desert and the enormous open pit Ray mine as we watch the railroad action. We see some switching action involving rare locomotive types. Two of the locomotives we see in action are four-axle GP-39s of which only 23 were ever built. We then see three six-axle SD-39's of which only 54 were ever built. The GP-39s bring the ore cars up from the mine to Ray Junction and then power is switched to the SD-39s for the trip to the smelter in Hayden. While still on the Copper Basin Railway we are shown some beautiful desert flowers, the iconic saguaro cactus that we all associate with the Arizona desert, an up close and personal look at a four and a half foot long diamondback rattlesnake, and yet another symbol of the Arizona desert, a road runner.

Next up is the San Manuel Arizona Railroad which connects with the Copper Basin Railway at Hayden and runs south for 30 miles to San Manuel. It is owned by the Magma Copper Company and serves their mine at Hayden. We see two GP 38-2's in action on this railroad. A little later we see a pair of Alco RS 3's belch

their signature billows of black smoke as they begin to move. We see the loading operation at the Magma copper mine, which is both an open pit and an underground mine. Large buckets of ore are elevated from the mine by a huge hoist and the ore is dumped into a silo for loading onto the ore cars.

The Magma Arizona is owned by the same copper company that owns the San Manuel Arizona Railroad. The Magma has on its roster three Baldwin locomotives, an S 8, an S 12, and a six axle DRS 66-1500 that had not been used in years when this video was shot. This railroad operates on 28 miles of track from Magma Junction, where it interchanged with the SP, to Superior.

Next up is the Arizona Eastern which runs 134 miles NW from its connection with the SP at Bowie, AZ, to Miami, AZ, where it serves a smelter owned by Cypress Corporation. We watch a train pulled by three GP 20s run down one of the main streets of Globe, AZ.

We visit the Arizona & California next, which is actually a regional railroad rather than a short line, and then we see the final railroad, the Apache. The Apache rosters all Alco locomotives.

I give this video a good solid "B." It was worth the purchase price but it would have been so much more impressive if it had been shot in wide screen.



This amusing photo was sent in to me this month. Sorry, I cannot remember who sent it. Hope the CSX crews can take a joke.



**Minutes Summary of April 15 Meeting 2013**

- ◆ MINUTES: Approved of the March meeting.
- ◆ TREASURER REPORT: Approved
- ◆ OLD BUSINESS: Mayfield trip is still pending. Keith left 2 messages with man who's to confirm details. Matt is working on the cards and needs chapter E-mail for them He was given it. Chapter approved the cards. Steve Miller is working on scanning slides from members, and will volunteer to check into procedure for doing this. Details later. Members need to get their slides to him. The video projection equipment at the center is ours to use but may need some repair. This will be checked into. Steve needs money for our trip to Monterey this fall. Discussion on cabinet at mall, Rick may have key-will check.
- ◆ NEW BUSINESS: Date for our Crofton picnic is Sep.28.The Princeton railroad museum was sold last Saturday. Cliff Downey E-mailed the membership about a project he is doing-putting slides on DVD. Asked chapter for donation. Discussion held and it was felt the chapter should leave it up to individual members to donate on their own if they so desired. Wally reported the Adams ,TN steam show will be 19 and 20 July. Also, dates set for Friday Night Live are: 14 June, 12 July and 9 Aug.
- ◆ DIRECTOR REPORT: Wallace had no report.
- ◆ NEXT MEETING: May 20 at Hopkinsville with that group hosting program and refreshments.

Those Present:

- |                  |                     |
|------------------|---------------------|
| 1.Rich Hane      | 12.Bill Ferrell     |
| 2.Tom Johnson    | 13 Blair Terry      |
| 3.Wally Watts.   | 14.David Millen     |
| 4.Steve Niller   | 15.Keith Kittinger  |
| 5.Rick Bivins    | 16.Bill Heaton      |
| 6.Danny Koeber   |                     |
| 7.Chuck Hinrichs | GUESTS:             |
| 8.Donny Knight   | 1.Richard A. Vaughn |
| 9.Matt Gentry    | 2.Alicia Terry      |
| 10.Birk Fischer  | 3.Tom Herron        |
| 11.Bill Thomas   |                     |



**April 2013 Financial Report**

WESTERN KENTUCKY CHAPTER  
 NATIONAL RAILWAY HISTORICAL SOCIETY, INC.  
 FINANCIAL STATEMENT  
 15 APRIL 2013

BEGINNING BALANCE:		\$ 1005.26
INCOME:		
National Dues Received	\$ 92.00	
Chapter Dues Received	49.00	
Donations	3.00	
Other: RAFFLE IN MARCH	16.00	
TOTAL		160.00
	ADD. BAL.	1165.26
EXPENDITURES:		
National Dues Paid	\$ _____	
Postage	_____	
Printing	_____	
Flowers	_____	
Supplies	_____	
Other: <i>no expenditures</i>	_____	
TOTAL		0.00
ENDING BALANCE		\$ 1165.26

MEMBERSHIP STATISTICS:

Beginning Membership		42
National Members Added		
National Members Deleted	1	
Chapter Only Members Added		
Chapter Only Members Deleted		
Ending Membership		41

*Wally Watts*  
 Chapter Treasurer



**Don't forget about  
 our display at Madisonville's  
 Friday Night Live June 14,  
 July 12, and August 9!**

**Left:** Our own chapter member Don Clayton is pictured here at his retirement reception at Madisonville Community College where he retired as a mathematic professor recently. Don looks forward to continuing and expanding his hobby of rare mileage rail travel. Congratulations Don!!!!



# Regional Rail News



The Western Kentucky NRHS chapter is getting a group together for the Monterey Super Fall Foliage Excursion. The excursion is October 12, 2013 and boards at 7:30AM at the TCRM in Nashville, TN. This is the 216 mile round trip, see the web site for details (<http://tcry.org/pdf/13-10-12.pdf>).

The deadline for the group rate has passed, but if you are interested, go to the TC Railway Museum's website and check on availability of tickets. They can still be purchased individually and the trip is well worth the reasonable price.



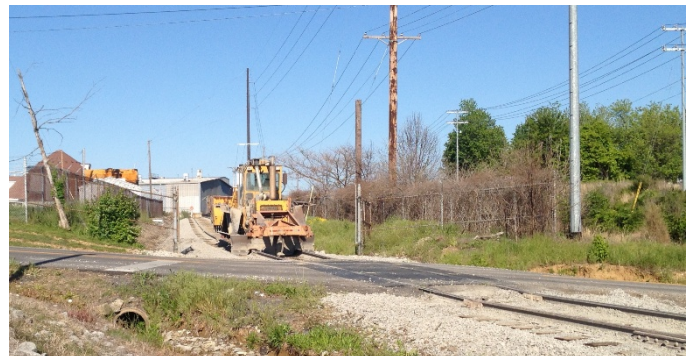
**Right:** This view shows Alstrom siding crossing Pride Avenue, and the track work machine.

Alstrom, a local paper products company in Madisonville recently installed a replacement siding off the Morganfield Branch just west of Madisonville. I've often wondered how CSX keeps the boxcars off the ground. Compare it to CSX's part of the siding in the picture below.



Tom Johnson, Chapter Member, works at Alstrom, and was fortunate to receive a small piece of rail from the old siding dated 1898, thanks to the project engineer Bill Carter, employed by Alstrom. I would assume those rails had been recycled from another location on the L&N.

**Left:** You can see the CSX maintenance limit sign to the left of the siding which obviously corresponds to the condition of the track work.





## TIMETABLE #110

FOR THE GOVERNMENT OF RAILFANS ONLY

- **West Kentucky NRHS Chapter Meeting -**  
Monday, May 20, 7pm, Former L&N Passenger Depot, Hopkinsville, KY
- **West Kentucky NRHS Chapter Meeting -**  
Monday, June 16, Madisonville, KY
- **Friday Night Live -** June 14, 2013 -  
WKYNRHS display on old Courthouse Lawn
- **Friday Night Live -** July 12, 2013
- **Friday Night Live -** August 9, 2013
- **Crofton Chapter Picnic -** September 28

If you know of regional events we can put on the Timetable, please forward those to me, [bill@fbcmadisonville.com](mailto:bill@fbcmadisonville.com).

**PENNYRAIL” is your publication. If you have photographs or other material of current or historical interest that you would like to share with Chapter members, your editor would appreciate hearing from you. Your material will receive the best of care while being readied for publication. Your help is appreciated.**

*Bill Thomas, editor*

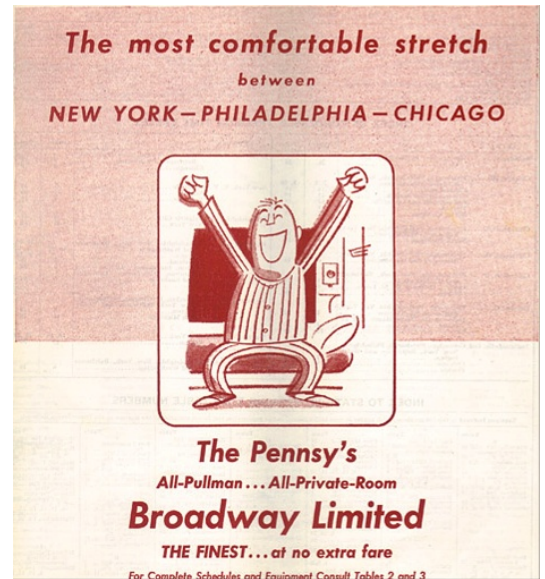
[bill@fbcmadisonville.com](mailto:bill@fbcmadisonville.com)

AS RAILFANS WE ARE OFTEN AT TRACKSIDE AND IN POSITION TO OBSERVE EMERGENCY CONDITIONS THAT COULD AFFECT RAILROAD SAFETY OR SECURITY. KEEP THESE NUMBERS HANDY TO REPORT INCIDENTS.

BNSF	800-832-5452
CN/IC	800-465-9239
CSX	800-232-0144
NS	800-453-2530
UP	888-877-7267
Amtrak	800-331-0008

**Right:** This was one of the ads that regularly appeared in PRR public timetables starting in 1957, a period during which the railroad heavily promoted the "Broadway". For the first time in their history as rivals, the "Broadway" began to beat the NYC's "20th Century" in ridership, particularly after the "Century" was downgraded and began carrying coaches in 1958.

-Dr. Fred Ripley



**National Railway Historical Society**

[www.nrhs.com](http://www.nrhs.com)

**Railway Preservation News**

[www.rypn.org/](http://www.rypn.org/)

**Kentucky Railway Museum**

[www.kyrail.org/](http://www.kyrail.org/)

**Indiana Railway Museum and French**

**Lick Scenic Railway**

[www.indianarailwaymuseum.org](http://www.indianarailwaymuseum.org)

**Illinois RR Historical Society**

<http://icrrhistorical.org/>

**Illinois Railway Museum**

[www.irm.org/](http://www.irm.org/)

**Tennessee Central**

**Railway Museum**

[www.tcry.org/](http://www.tcry.org/)

**VISIT THE CHAPTER WEB SITE: <http://www.westkentuckynrhs.org>**

### PENNYRAIL

% Bill Thomas, Editor

1025 Lakewood Drive

Madisonville, KY 42431